



PROUD

Whakahihi

P



ACTIVE

Takatu

A



PASADENA INTERMEDIATE

Student Information

**STARTING AT
PASADENA
2026**



SAFE

Hau maru

S



HIEVERS

Angitu

A

NAU MAI, WELCOME TO PASADENA

MY CLASS DETAILS FOR 2026

My teacher's name is: _____

I am in Room: _____

My teacher's email address is:

_____@pasadena.school.nz

AT PASADENA, WE SHOW OUR VALUES

PROUD
ACTIVE
SAFE
ACHIEVER

YOUR FIRST DAY AT PASA

THURSDAY 29TH JANUARY 2026

When does school start and finish on the first day?

On Thursday 29th January there will be a pōwhiri at 8am in the School Hall. School will start at 9am and finish at 3.00pm.

What should I wear?

The correct school uniform. School uniform needs to be worn to and from school. Please also bring your P.E gear and a school hat.

What should I bring?

Your stationery box if you have one otherwise a pen and paper, a drink bottle and your lunch.

Where do I go?

Head straight to your classroom. If you are unsure which classroom you are in, there will be staff available to help you.

Can I bring my phone?

Yes, however phones are collected each morning by your teacher, put in a box and stored safely at the office. It is returned to you each afternoon before the bell is rung. There is no phone use during the school day. If you need to contact your family you can come up to the school office.

Parents

Parents are invited to attend the 8.00am pōwhiri. From 8.30am parents are invited to the staffroom to have a cup of tea and meet key staff and other parents.

Usual School hours

Monday to Thursday 8.45am - 3.00pm
Friday 9.00am - 3.00pm

Students are asked not to arrive before 8:00am, unless involved in an official school activity with a teacher, and are asked to leave the grounds by 3:15pm.

Timetable

Block 1: 8.45am - 10.05am
Interval: 10.05am - 10.25am
Block 2: 10.25am - 11.35am
Lunch Eating: 11:35am - 11:50am
Block 3: 11.50am - 1.00pm
Recreation: 1.00pm - 1.45pm
Block 4: 1.45pm - 3.00pm

School communication

Pasadena communicates with parents in a variety of ways.

Email office@pasadena.school.nz

Website www.pasadena.school.nz

Hero, search for 'Hero LINC-ED' in your app store and download.

Our school newsletter is emailed out every 3 weeks, and we also share information on our Facebook page.



SCHOOL MAP

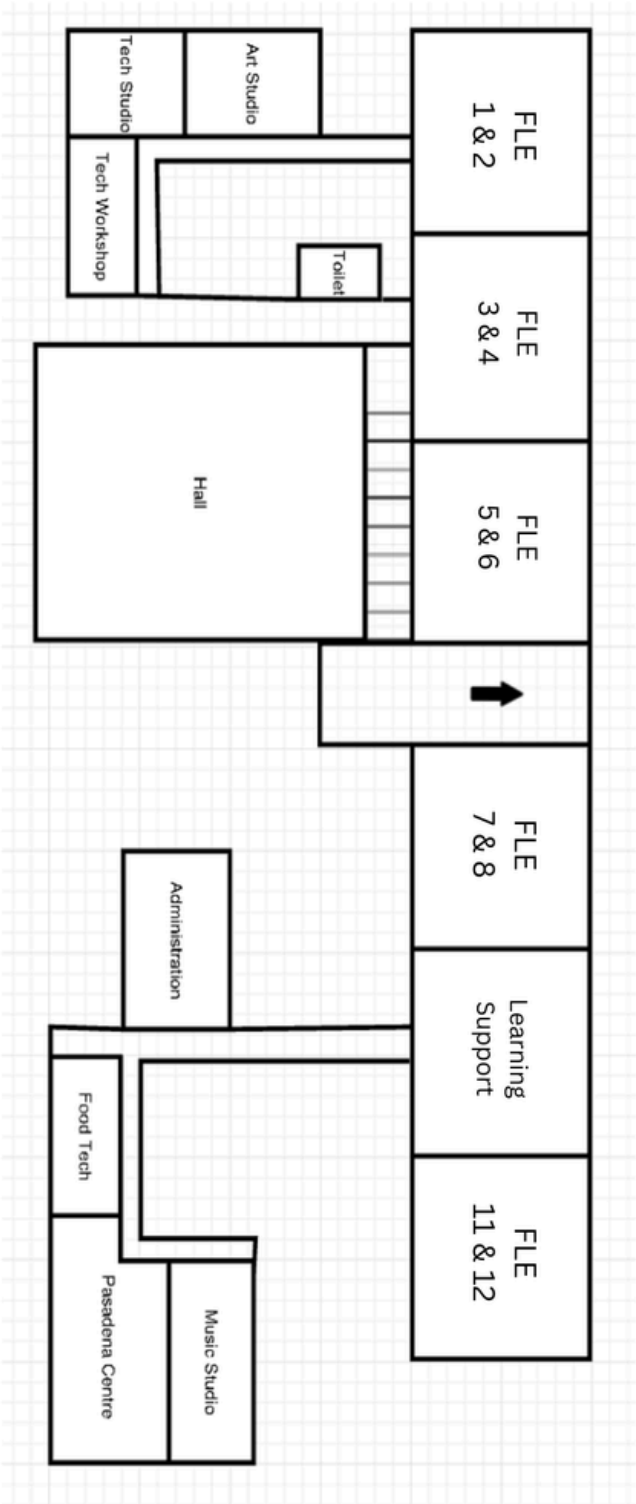


Map 2026

FILE 13 & 14	FILE 15 & 16	Library
FILE 17 & 18	FILE 19	

Rm 3: Dylan Wiggill
 Rm 4: Marie Satele
 Rm 5: Emma Cornwall
 Rm 6: Ella Bartholomew
 Rm 7: Talia Rissling
 Rm 8: Kirti Raju
 Rm 11: Keith Ward
 Rm 12: James Tomlins

Rm 13: Amanda Kemp
 Rm 14: Dylan Charter
 Rm 15: Charlotte Asi-Marsters
 Rm 16: Darcy-Lee Mitchell
 Rm 17: Kingi Tupene
 Rm 18: Piripi Cotter

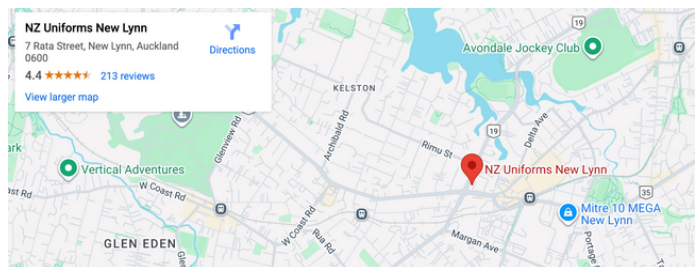


STATIONERY BOXES SCHOOL UNIFORM

STATIONERY BOXES (\$50.00) CAN BE PURCHASED DIRECTLY FROM THE SCHOOL OFFICE FROM WEDNESDAY 21 JANUARY TO WEDNESDAY 28 JANUARY BETWEEN 9.00 AM - 1.00 PM.

FROM THURSDAY 29 JANUARY, BOXES CAN BE PURCHASED DURING NORMAL SCHOOL HOURS

In 2026, school uniforms can be tried on for sizing and purchased from the **NZ Uniform Store** **7 Rata Street, New Lynn.**



School uniforms can also be purchased from our online shop, which can be accessed from our school website or at <https://pasadena.nzuniforms.com>



HOW TO ORDER YOUR SCHOOL UNIFORM ONLINE

Click on the link 'Buy your uniform online' on our school website
www.pasadena.school.nz

Choose delivery to your home or work address



PAYMENT OPTIONS
We accept all major credit and debit cards and part-payment through ZIP. We also offer the 'Uniform Club', a great way to save for your school uniform purchases. Visit nzuniforms.com to join.

NAME LABELS
We can add a name label to the inside of each uniform item. Name labels last up to 300 washes. Add to your order online.

SCHOOL UNIFORM

All uniform items can be bought from <https://pasadena.nzuniforms.com> or from the NZ Uniforms Store - 7 Rata Street, New Lynn



Formal Uniform

School Hoodie - \$65.00
 School Polo - \$40.00
 Shorts - \$45.00
 Trousers - (Orders required)
 Culottes - (Orders required)
 School Hat - Navy Blue Cap \$22.00 or Navy Blue Full Brimmed Bucket Hat -\$24.00

PE Uniform

Dri-fit PE Shirt - \$40.00
 Dri-fit PE Shorts - \$35.00

Optional Winter Uniform

Rain Jacket - \$90.00
 School Beanie \$22.00

The following items can be purchased from outside the uniform shop:

- Socks - White or black
- Shoes - Black; Lace-up (to be worn with socks)
- Sandals - Black or Brown with heel strap (to be worn without socks)

All students need to wear the correct uniform, no other items are allowed.

The school uniform is unisex.

Please ensure all uniform items are clearly named.

SCHOOL PROCEDURES

Absence

Parents must notify the school office before 8.45am by telephone 09 846-2169, text 0274688003, via the Hero app, or email on office@pasadena.school.nz. An explanation for the absence must be included.

Lateness

Students should be in their class **before 8.45am** so that they are ready for learning and don't miss important notices. If a student is late to school they must report to the office and sign in. Students will need to have a legitimate reason for being late. Ongoing lateness will be monitored by the Senior Leadership Team.

Incorrect Uniform

If, for any reason, students need to wear the incorrect uniform they must bring a note from their parents/caregivers and get a uniform pass from the Deputy Principal: Leia Silby.

Lost Property

Lost Property is located in the school office. If the item is named, students will be notified. It is essential that all uniform items, drink bottles and lunch boxes are clearly names.

Homework

Students receive 30 minutes of homework per night. This can be completed over the week. Teachers will explain the procedures in detail at the start of the year.

Bikes and Scooters

Students who ride their bikes and scooters to school can lock them in the bike racks behind the school office. Please make sure they are locked at all times.

School Lunches

Lunches can be ordered using the website www.lunchonline.co.nz or from the school website before 9am.

School Office Hours

The School Office is open from 8.00am - 4.00pm. Uniform hats and stationery can be purchased during these times. The office is closed during term holidays.

Pastoral Care

Pastoral care is very important to us. In the first instance, contact your child's classroom teacher. Our Counsellor Anu Radha, is available on Wednesdays and Thursdays. She can be contacted at wellbeing@pasadena.school.nz. Following this, contact our Deputy Principal, Leia Silby via email leia@pasadena.school.nz or phone the office on 8462169.



KEY SCHOOL CONTACTS

School Office: 09 8462169
School Email: office@pasadena.school.nz
School Mobile: 0274688003.
School Website: www.pasadena.school.nz

Principal: Sanjay Rama
sanjay@pasadena.school.nz

Deputy Principal: Christine Abercrombie
christine@pasadena.school.nz

Deputy Principal / SENCO: Leia Silby
leia@pasadena.school.nz

Rumaki and Bilingual Pathways Strategic Leader: keeghan@pasadena.school.nz

Administration Officer: Sharon Nightingale
sharon@pasadena.school.nz

School Receptionist: Lina Fuimaono
lina@pasadena.school.nz

Counsellor: Anu Radha
wellbeing@pasadena.school.nz

Learning Support: Rebecca Somerville
rebecca@pasadena.school.nz

TEACHERS | KAIAKO

Room 3: Dylan Wiggill
dylan@pasadena.school.nz

Room 4: Marie Satele
marie@pasadena.school.nz

Room 5: Emma Cornwall
emma@pasadena.school.nz

Room 6: Ella Bartholomew
ella@pasadena.school.nz

Room 7: Talia Rissling
talialia@pasadena.school.nz

Room 8: Kirti Raju
kirti@pasadena.school.nz

Room 11: Keith Ward
keith@pasadena.school.nz

Room 12: James Tomlins
james@pasadena.school.nz

Room 13: Amanda Kemp
amanda@pasadena.school.nz

Room 14: Dylan Charter
dylanc@pasadena.school.nz

Room 15: Charlotte Asi-Marsters
charlotte@pasadena.school.nz

Room 16: Darcy-Lee Mitchell
darcy-lee@pasadena.school.nz

Room 17: Kingi Tupene
kingi@pasadena.school.nz

Room 18: Piripi Cotter
piripi@pasadena.school.nz

Sports Co-ordinator: Jerome Brown
jerome@pasadena.school.nz

Visual Arts: Clare Thompson
clare@pasadena.school.nz

Performing Arts: Adam Fresco
adam@pasadena.school.nz

Food Technology: Kelly Allington
kelly@pasadena.school.nz

Technology: Olivia Leeming
olivia@pasadena.school.nz

KEY DATES 2026

2026 TERM DATES

Term 1: Thursday 29th January – Thursday 2nd April

Term 2: Monday 20th April – Friday 3rd July

Term 3: Monday 20th July – Friday 25th September

Term 4: Monday 12th October – Thursday 10th December

TERM ONE IMPORTANT DATES

Thursday 29th January: First Day of School Pōwhiri
8am in the School Hall. School Starts 9am

Thursday 5th February: Meet the Teacher Picnic
6pm - 8pm

Friday 6th February: Waitangi Day

Tuesday 10th February: Overseas Trip Meeting

Tuesday 17th February: Camp Parent
Information Evening 6.30pm

Monday 9th March - Friday 13th March: Camp -
Tui Ridge Park near Rotorua

Tuesday 17th March: Assessment Evening

Thursday 26th March: School Social 6.30pm -
8.00pm

**Tuesday 31st March (1pm - 8pm) & Wednesday
1st April (1pm – 6pm):** Student Led Conferences -
school finishes 12.45pm both days

Thursday 2nd April: Last day of term, school
finishes at 2pm

School Holidays

Friday 3rd April - Sunday 19th April

Monday 20th April: Start of Term 2



BRING YOUR OWN DEVICE

Security

Security of devices is important and strong systems have been developed for securing devices. Lockable storage is available. Devices will be safely and securely stored during recreational intervals and not used during these times.

Recommended Devices

Chromebooks - these are the most cost effective devices currently available that work seamlessly with Google Apps
Laptops - the range of laptop devices is vast and tends to be divided into PC and Mac machines.

iPads & Tablets - there are several variations of tablets available. We are a Google School, so access to Google Apps is a minimum requirement

Advantages of BYOD

- Students are more likely to continue learning outside of the school hours
- Students take good care of their own devices
- Students love technology, BYOD will engage, create enthusiasm and excitement about learning
- Students who are familiar with their own device will focus on learning rather than needing to log into shared devices
- Increased level of student agency and added responsibility for looking after their own device

BYOD

The Bring Your Own Device (BYOD) approach is popular across schools nationwide and allows students to use personal devices for curriculum related activities. As a result, **Pasadena is a BYOD school with the expectation that every student will bring a device from home to class every day.**

With the development of the new flexible learning spaces at Pasadena, the presence and availability of devices for each student in the classroom is becoming a necessity. With the introduction of the new Digital Curriculum, which our school is leading the way in the local area, technology and devices are being moulded into the everyday teaching programme.

At Pasadena we see the use of technological devices in class as the natural way to move forward and keep up in a tech-dependent world. There is a limited number of Chromebooks available for students to use in each classroom. Moving forward we feel that the BYOD programme enables the majority of students to work together using personal tools that they are already comfortable with.

Any questions, please contact your child's classroom teacher.



CAMP EDUCATION OUTSIDE THE CLASSROOM

Camp will take place next year in Term 1 between 9th - 13th March at Tui Ridge Park near Rotorua.

Tui Ridge Park is an awesome place for a school camp with a range of different adventure activities, great food and cosy accommodation with makes for an experience students will never forget!

While at camp, over 3 days, students stay in dorms and embark on exhilarating activities such as High Ropes, Mountain Biking, Giant Swing, Flying Fox, and Geocaching while building on valuable teamwork skills.

Camp is an awesome opportunity for students to consolidate relationships with staff and students, challenge themselves physically, mentally and socially, learn new skills and refine old ones as well as developing leadership skills.

The cost for camp will be approximately **\$400**, this will be confirmed in mid February.

There will be a Camp Parent Information Night on Tuesday 17th February at 6.30pm where more information will be discussed, and there will be an opportunity to ask any questions you may have.



OVERSEAS TRIPS 2026

At the start of the year we will explain the application process for the trips below.

CAIRNS ECO TRIP

This eco-adventure trip will provide an opportunity for a small group of students to experience the cultural uniqueness and environmental beauty of Cairns. Students will explore the area's biodiversity, sustainability initiatives and wildlife. Activities include:

- Visiting the Cairns Aquarium
- Trip to Hartley's Crocodile Farm
- SunLover Reef cruise
- Sky rail Rainforest Cableway
- Snorkelling in the Great barrier Reef
- Tour of authentic indigenous villages

The trip will take place in September 2026 and will cost approximately \$3300-\$3600



HIROSHIMA JAPAN CULTURAL EXCHANGE

Pasadena Intermediate and Nagisa Hiroshima Junior High School have been involved in annual student exchanges for 28 years. Past exchanges have proved to be fantastic learning experiences for the students who have participated, many making lifelong friends. Students on this exchange will stay in a hotel during a stopover in Tokyo and will be hosted by a Japanese student's family in Hiroshima, having the opportunity to genuinely experience Japanese culture and hospitality. Later in the year, Pasadena will host students from Nagisa Hiroshima Senior and Junior High School where they will experience a similar exchange here, staying with our students. Activities include:

- Tokyo for 2 nights where we go to Disneyland and Tokyo Tower
- Exchange with Nagisa Junior High School in Hiroshima where students stay with their host family. During this stay they will attend their host student's class and participate in PE, Music, Science, Art, Maths and English lessons, attend Japanese classes such as Flower Arranging and participate in excursions to places of interest in the region of Hiroshima (e.g. Mazda museum, Peace Memorial Park)

The Japan Cultural Exchange will take place in May 2026 and will cost approximately \$4500-\$4800

